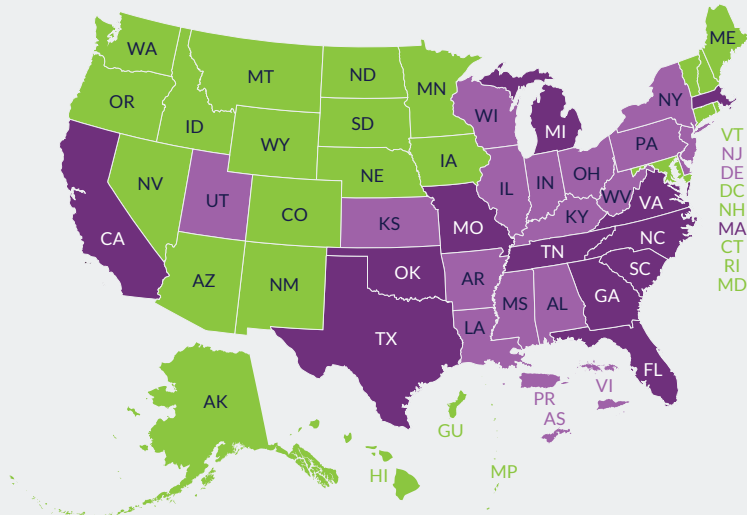


in Many States³

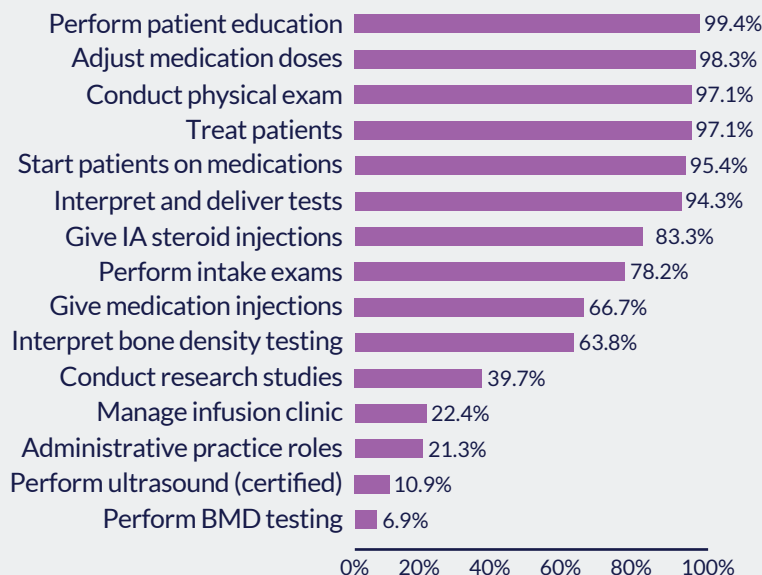
■ Full Practice

■ Reduced Practice

Restricted Practice



What Do APPs Do in Rheumatology?⁴



We Can Impact These Trends with a Few Steps

Step 1



Develop better/more training opportunities for new NPs and PAs coming into rheumatology

Step 2



Offer educational opportunities to introduce new NPs/PAs to the specialty of rheumatology

Step 3



Provide rheumatology
NPs/PAs/nurses with
growth opportunities
and a career pathway

Step 4



Share our stories
and our successes

References

1. <https://www.rheumatology.org/portals/0/files/ACR-Workforce-Study-2015.pdf>
2. <https://www.athenahealth.com/insight/sites/insight/files/12.11%20The%20doctor%20will%20see%20you%20...%20sometime.pdf>
3. <https://storage.aanp.org/www/documents/state-leg-reg/stateregulatorymap.pdf>
4. Solomon DH et al. Arthritis Care Res (Hoboken). 2014;66(7):1108-13



RHEUM
FOR *you*

Exploring Rheumatology
as a Practice Specialty

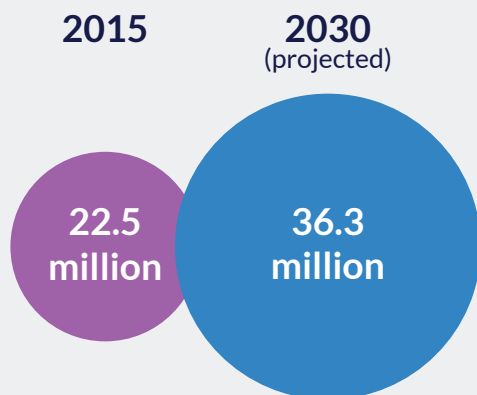
Exploring Rheumatology as a Practice Specialty

THE RHEUMATOLOGY WORKFORCE SHORTAGE:

What It Means for Nurses and Advanced Practice Providers (APPs)

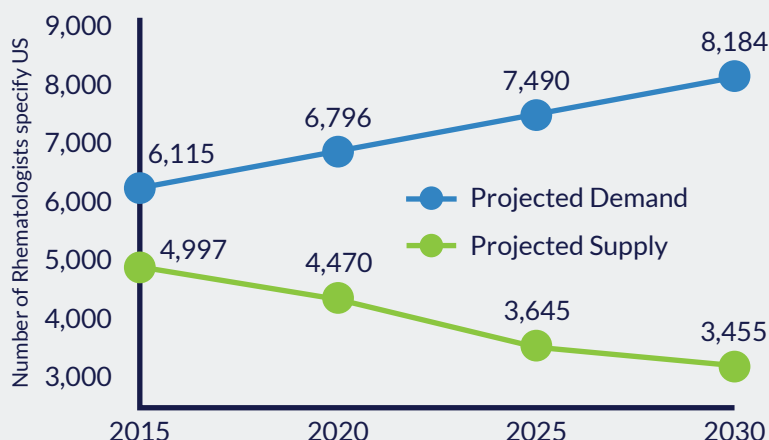
The Scope of the Problem

The Prevalence of Rheumatic Diseases* in the U.S. is Increasing¹

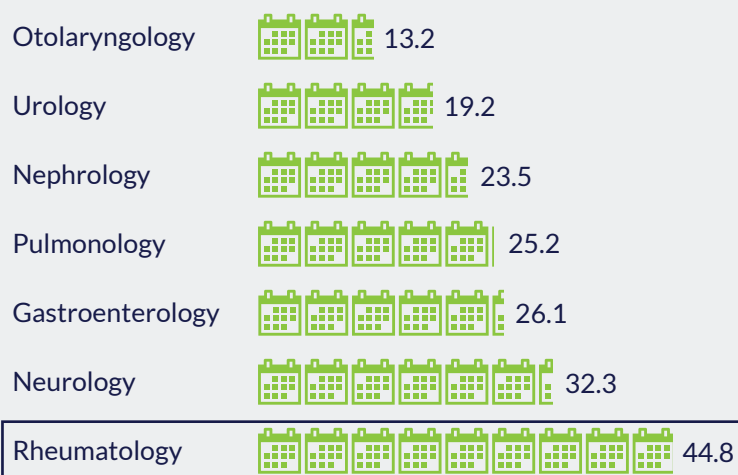


*Rheumatoid Arthritis, Spondyloarthropathies, Systemic lupus erythematosus, Clinical osteoarthritis, Gout, Fibromyalgia

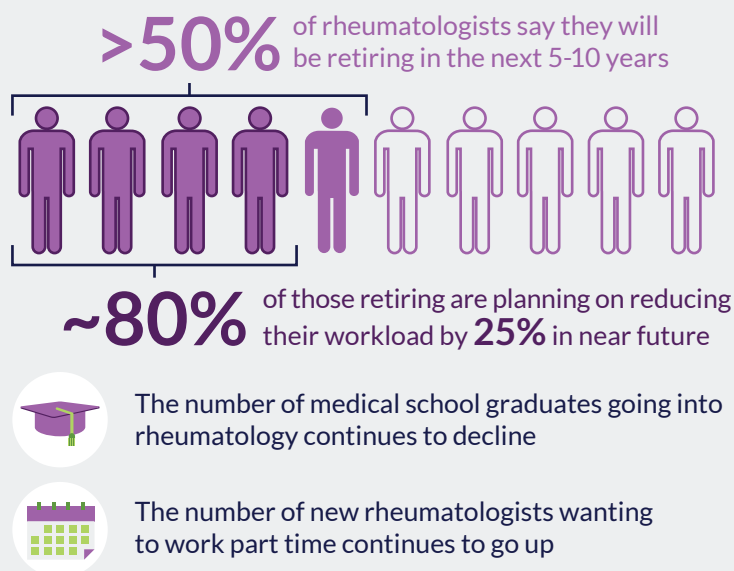
There is a Widening Gap in the Number of Rheumatologists Needed vs. Their Supply¹



Average Wait Time for New Patient Appointments Can be More than 6 Weeks²



What is Driving This Crisis?¹



So, What's the Solution?

"NP/PAs have been identified as one means of augmenting the rheumatology workforce. Assuming successful recruitment and training efforts are in place, the sensitivity testing increased the number of NP/PAs available for rheumatology from the estimated 2% to 5% to a range of 10% to 30%."



American College of Rheumatology (ACR) workforce study



Jack Cush, MD
Director of Rheumatology
Baylor University Medical Center

"Not surprisingly, most (current rheumatologists) would like to see more fellows and young rheumatologists entering the market. But there are limitations on funding of (graduate medical education) for rheumatology, and the interest and recruitment efforts are not there. Expansion with NP/PA applicants still is a second option for many. Time to wake up and realize for most, this may be your only option."

"Significant clinical research on nursing activities in rheumatoid arthritis has been published... showing that nurse-led care in the outpatient setting can achieve comparable or better results than physicians alone. The time is now to aggressively further investigate and implement the role of nurses in rheumatologic care."



Terence Starz, MD
Clinical Professor of Medicine
University of Pittsburgh